



VII Euro-Asian Symposium «Trends in MAGnetism»
September 08–13, 2019, Ekaterinburg, Russia
M.N. Miheev Institute of Metal Physics UB RAS



THIRD ANNOUNCEMENT

Dear Colleagues, Dear Friends!

Thank you very much for your interest in the EASTMAG Symposium!

The VII Euro-Asian Symposium “Trends in Magnetism” (EASTMAG-2019) will be held in Ekaterinburg, Russia, September 08-13, 2019.

More than 600 scientists from all over the world had registered as participants of EASTMAG-2019. Thank you for your interest in the EASTMAG Symposium!

Below, we summarize the important information about the venue, presentation guidelines, scientific program, hotels, and cultural program of EASTMAG-2019.

VENUE

The sessions of the Symposium during **September 9 – 13** will be held in the main building of the M.N. Miheev Institute of Metal Physics Ural Branch of RAS (IMP). Address: 18, S. Kovalevskaya str., main entrance. The map is available [here](#). Below in **Appendix A** please find the instructions how to reach the Symposium venue (in English and in Russian).

The registration and opening ceremony on September 8 (Sunday) will be organized in the Cultural Center "Ural" (Ekaterinburg, 3, Studencheskaya str. about 15 minutes' walk from the Institute of Metal Physics). Location of the "Ural" Cultural Center is available [here](#). Below in the **Appendix B** please find the map.

PROGRAM

The program of EASTMAG-2019 is available at <http://eastmag2019.imp.uran.ru/?q=Program>.

The EASTMAG program on September 8 (Sunday)

Time

12:00 **Registration**

16:00 **Opening Ceremony**

16:30 **Sang-Wook CHEONG.** Chirality, Helicity, Spirality and Moire Patterns in Intercalated Transition Metal Dichalcogenides (*Plenary talk*)

17:10 **Gen TATARA.** Spintronics theory without spin current (*Plenary talk*)

18:00 **Welcome Party**

PRESENTATION GUIDELINES

Plenary talks - 40 minutes (including discussion)

Invited talks - 30 minutes (including discussion)

Oral talks (regular) - 15 minutes (including discussion)

Your presentation can be a multimedia presentation (Microsoft PowerPoint) or PDF in English. The screens and presenting equipment of EASTMAG-2019 at IMP UB RAS is best suited for the standard 4:3 aspect ratio of PowerPoint. (16:9 and other formats are better be avoided.)

Please bring your presentation file on a USB stick and give it to the Symposium staff at least 15 minutes before your session. If you plan to use your laptop to show your presentation, please check that it has HDMI, or bring the HDMI adapter with you.

Poster presentations should be prepared at standard A0 or A1 formats for individual boards with the maximum size of 120x120 cm².

ORGANIZING COMMITTEE

The EASTMAG-2019 organizing committee will be located in the **room 224** of the IMP main building. It can be reached from the main entrance, main stairs, 2-nd floor, south wing. See **Appendix C** below.

In the Organizing committee room, two desktop computers with the possibility of using a printer will be available.

The free Wi-Fi zone will be available at the Organizing committee room and in the halls A, B and C.

Phone: +007-343-378-38-10

+007-912-21-21-899 (from Sept/7)

E-mail: eastmag2019@imp.uran.ru

<http://eastmag2019.imp.uran.ru>

SATELLITE CONFERENCE

The International conference AMM-2019 "*Ab-initio* modeling of advanced materials", September 10-13th, 2019, Ekaterinburg, Russia, is the satellite conference of VII Euro-Asian Symposium "Trends in Magnetism".

The conference will focus on the recent progress in development and application of *ab-initio* based methods for calculation and thermodynamic/kinetic modeling of microstructural and finite-temperature properties of wide range of materials, from steel and alloys up to modern functional compounds.

The AMM conference sessions will take place in the Conference hall of the "Onegin" Hotel (Ekaterinburg, Rozy Lyuksemburg str., 49). The transfer between Institute of Metal Physics and Onegin Hotel twice a day (for morning and afternoon sessions) will be organized.

VISA

We would like to remind you about visa needed to visit Russia during the Symposium. The information on application procedure to visit Russia can be found in the nearest Russian embassy or consulate where you can apply. The Organizing committee can help you with the Visa Invitation Letter. For details, see <http://eastmag2019.imp.uran.ru/?q=Visa>.

REGISTRATION FEES (on-site payment)

Participant – 500 €

Accompanying person – 50 €

Students – 100 €

The Russian residents working permanently in Russian national organizations are financially supported by the Russian Foundation for Basic Research.

The full registration fee includes: admission to all scientific sessions; bag with a set of participant: the handbook of Symposium Program, the USB flash drive with full-text Book of Abstracts; publication of full-length manuscript; welcome party admission; admission to the Coffee-tea breaks during sessions; participation in the Ekaterinburg city tour.

Participants who paid the full registration fee can also visit the satellite AMM conference.

The registration fee **DOES NOT COVER** the hotel accommodation, travel expenses, and cultural program (except for the Ekaterinburg city tour).

HOTELS

The Organizing Committee had negotiated special discounted rates at some hotels located near the M.N. Miheev Institute of Metal Physics or close to the Ekaterinburg railway station.

Please note, that the Organizing Committee does not book any rooms for the EASTMAG participants. The EASTMAG participants must book the hotels themselves.

In some hotels only direct booking via hotel website or e-mail is available for the dates of EASTMAG-2019.

The list of recommended hotels with the prices is available at the WWW site of the Symposium. Reduced prices are valid only while booking using the code word "EASTMAG".

The EASTMAG participants can choose any other hotel in Ekaterinburg upon their choice, which is not included into the list of recommended hotels.

For participants staying at Marins Park Hotel during EASTMAG session days the transfer to the Institute of Metal Physics will be organized.

SYMPOSIUM DINNER

The Symposium Dinner will be held in the restaurant "Cosmos", located in the center of Ekaterinburg city, on the bank of the Iset river pond, near the picturesque sights - the Temple on the Blood and the Literary Quarter.

After the Dinner the transfer to the hotels will be organized.

The price for Dinner is included in the full registration fee. The dinner is not included in the reduced registration fee of Russian participants and in the registration fee of accompanying persons of Russian participants. Additional payment will be required.

CULTURAL PROGRAM & OPTIONAL ONE-DAY TRIP

For all participants the Ekaterinburg city tour during the Symposium is organized on September 11 (Wednesday) starting from 15.00. This tour is free of charge for all participants of EASTMAG-2019 and accompanying persons.

We invite the participants of the Symposium to take part in other optional excursions to local museums and places of interest in Ekaterinburg. Participants should pay these excursions separately. The list of excursions can be found at the WWW page

http://eastmag2019.imp.uran.ru/?q=Cultural_prorgam .

Please book your tickets for these optional excursions online before August 25. The contact person: Ekaterina Krasikova, Project Manager of the "Solar Travel" travel company, Email: book1-oa@bk.ru; phone +7 922-29-15-772, +7 (343) 376-45-26.

We would like to remind you about outdoor optional one-day trip to the Nature park "Olenji Ruchji" ("Deer Streams") on September 14 (Saturday, the next day after the EASTMAG-2019 official closing), starting from 9:00, for details, see

http://eastmag2019.imp.uran.ru/?q=Cultural_prorgam.

THE WEATHER IN EKATERINBURG IN SEPTEMBER

The city is located in the continental climate geographical zone with an average temperature in September between +5...+15 degrees Celsius, rains are possible.

THE TIME IN EKATERINBURG

The time zone of Ekaterinburg is UTC+5 (two hours ahead of Moscow and five hours ahead of Greenwich).

PUBLIC TRANSPORT

The fare in Ekaterinburg public transport (tram, trolleybus, bus) is 28 rubles, in the metro - 32 rubles. The fare is paid in cash inside.

Public transport working hours in Ekaterinburg are from 6.00 to 22.00.

EASTMAG-2019 Organizing Committee

M.N. Miheev Institute of Metal Physics of Ural Branch of Russian Academy of Sciences

S. Kovalevskaya Str.18, Ekaterinburg, Russian Federation, 620108

Phone: +007-343-378-38-10

+007-912-21-21-899 (from Sept/7)

Fax: +007-343-374-52-44

E-mail: eastmag2019@imp.uran.ru

Website: <http://eastmag2019.imp.uran.ru>

Appendix A

HOW TO REACH THE SYMPOSIUM VENUE

The Institute of Metal Physics (IMP) is located at 18, S.Kovalevskaya street.

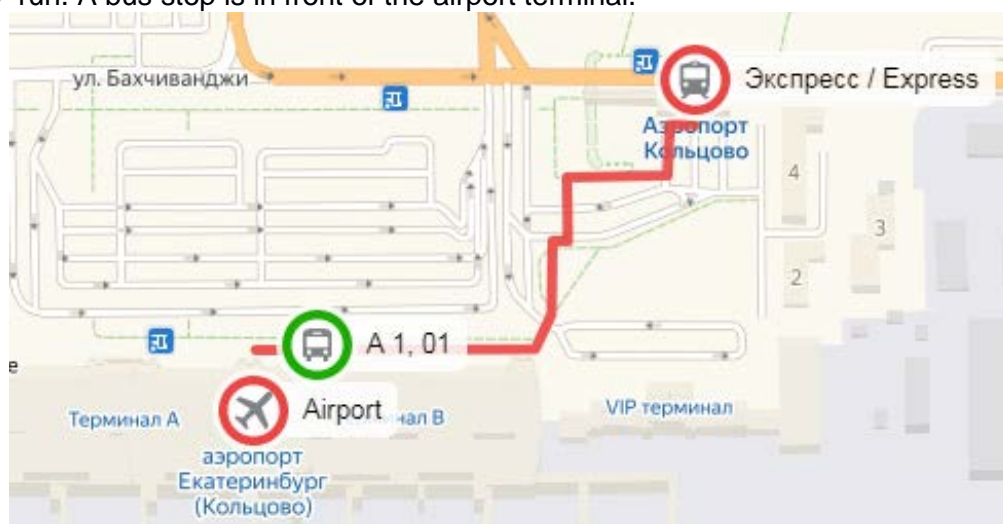
From the Ekaterinburg city airport “Koltsovo”

The Organizing Committee will organize transfer of the participants from/to the airport "Koltsovo". Please provide the Organizing Committee with the detailed information about your travel plans on the “Info” section of your personal account page http://eastmag2019.imp.uran.ru/?q=show_kabinet. Our representative will meet you at the airport. If you get lost, contact the Organizing committee by phone +007-912-21-21-899 (available from Sept/7)

Long-distance trains, including a train from the airport “Koltsovo”, arrive at the railway station “Ekaterinburg-Passazhirskiy”. Buses No. 1 and No. 01 from the airport “Koltsovo” arrive at the station square.

From the Ekaterinburg city airport “Koltsovo” to the railway station Ekaterinburg-Passazhirskiy

From the airport to the railway station buses No. 1 and No. 01, as well as the train “Express Koltsovo” run. A bus stop is in front of the airport terminal.



A - bus

Bus No. 1 follows with all stops from 06:08 to 23:41. Travel time is about 1 hour excluding traffic jams. Ticket price 28 rubles.

Express bus No. 01 follows non-stop and runs 24 hours a day with intervals of about 50 minutes. Travel time about 30 minutes excluding traffic jams. Ticket price 100 rubles. Baggage price 20 rubles.

Train "Express Koltsovo". The platform is located to the right of the airport building. Travel time is about 45 minutes, between ending stations there are seven intermediate stops. Ticket price 60 rubles.

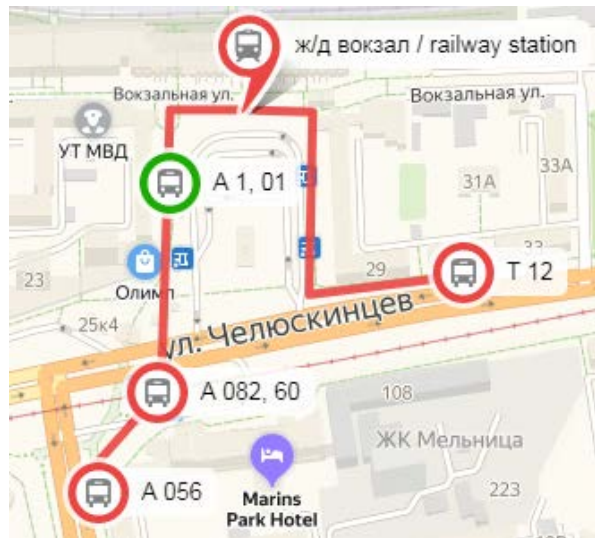
Schedule of the “Express Koltsovo” train (local time):

Station	Train number			
	6037		6039	
	Departure	Arrival	Departure	Arrival
Airport “Koltsovo”	08:28		20:26	
Pervomaiskaya	09:02	09:02	20:59	20:59
Ekaterinburg-Passazhirskiy		09:08		21:06

By the “Express Koltsovo” train you can get to the Pervomaiskaya station. Transfer to trams No. 4, 18 (stop “Vostochnaya”, direction under the railway bridge), then to the stop “Pervomaiskaya”.

From the railway station to the Institute of Metal Physics can be reached by bus and trolley. Estimated travel time 30 min.

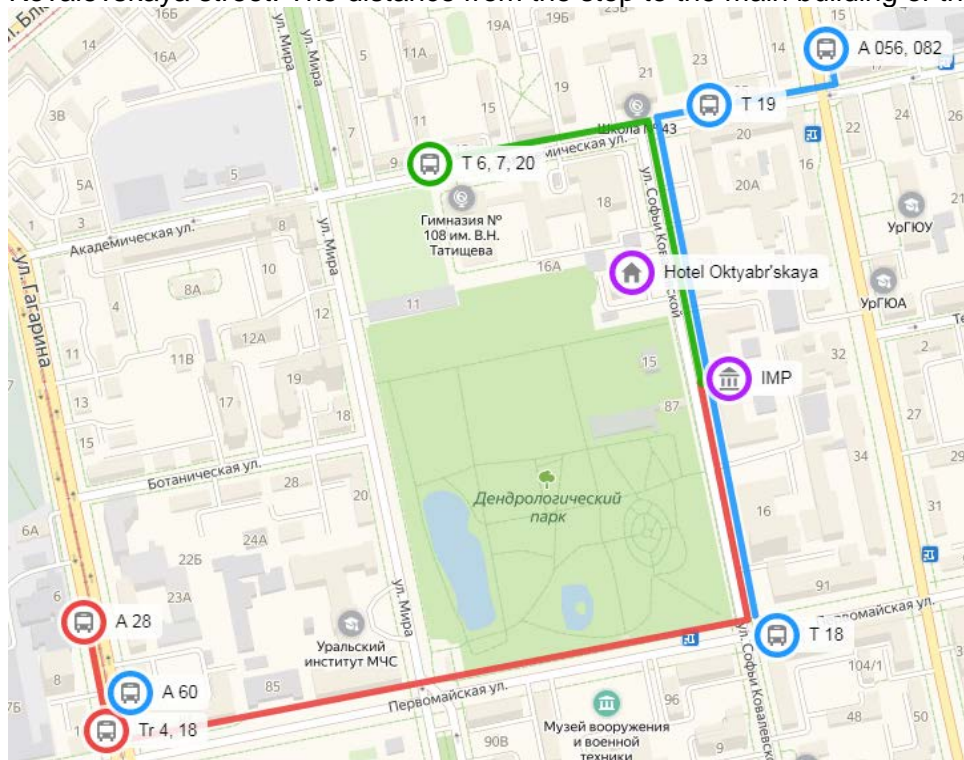
Buses No. 056, 082, 60. It is necessary to go through the underpass to the opposite side of the street. Chelyuskintsev. The stop of routes No. 082, 60 is located opposite the building of the railway station on ul. Chelyuskintsev, route number 056 - on the street. Sverdlov.



A - bus, T - trolleybus. Red indicates public transport stops. Green indicates bus stop from airport.

Buses No. 056, 082. Directions to the “Akademicheskaya” stop, then along the Akademicheskaya street to the intersection Akademicheskaya - S. Kovalevskaya streets, turn left. The distance from the stop to the main building of IMP is about 250 m.

Bus 60. Directions to the Pervomaiskaya stop. Further from the intersection of Gagarina - Pervomaiskaya streets, up along Pervomaiskaya, through the intersection of Mira - Pervomaiskaya to the intersection S. Kovalevskaya - Pervomaiskaya, turn left onto S. Kovalevskaya street. The distance from the stop to the main building of the IMP is about 800 m.



A - bus, T - trolleybus, Tr – Tram.

Trolleybuses. Trolleybus No. 18. The stop is located to the left of the railway station building on Chelyuskintsev street. Directions to the stop "Sophia Kovalevskaya" (from the stop back against the trolleybus to the intersection S. Kovalevskaya - Pervomaiskaya, turn right). The distance from the stop to the IMP main building is 250 m.

Trolleybus No. 19. Go through the underpass to the opposite side of Chelyuskintsev street. The stop is on the Sverdlova street. Directions to the "Akademicheskaya" stop (to the intersection Academiskaya - S. Kovalevskaya, turn left). The distance from the stop to the main building of the IMP is 300 m.

The fare in Ekaterinburg public transport (tram, trolleybus, bus) is 28 rubles, in the metro - 32 rubles. The fare is paid in cash inside.

Public transport working hours in Ekaterinburg are from 6.00 to 22.00. For participants arriving by train from 22.00 to 6.00 a shuttle will be arranged to the hotel. Please provide your arrival details on the EASTMAG website in your personal account.

The public transport from IMP

Nearest public transport stops (see the map above):

To the city center (Hotel "Tsentralnaya"): trolleybuses No. 6, 7, 20 from the stop "Mira" (green mark).

To the city center ("Ploshchad 1905 goda", "Ploshchad Truda", "Vostochnaya"): tram No. 18, bus No. 28. The distance from the IMP main building to the bus stop is 800 m (red mark).

To the railway station: buses No. 056, 082, trolleybus No. 19 from the stop "Akademicheskaya", bus No. 60 from the stop "Pervomaiskaya", trolleybus No. 18 from the stop "S. Kovalevskaya" to the stop "Railway station" (blue marks).

The station "Pervomaiskaya" (to the train "Express Koltsovo") can be reached by trams No. 4, 18 to the stop "Vostochnaya".

Taxi in Ekaterinburg.

Participants can use taxi services if necessary. Recommended companies: "Yandex taxi" (343) 266-66-66, "Tri desyatki" (343) 310-10-10, "Vezet" (343) 380-00-00, it is possible to get a taxi using your smartphone applications. Estimated fare of the trip from the city center or railway station to IMP is 200 rubles, from the airport - about 550 rubles.

You can find the free map of Ekaterinburg at the site www.2gis.ru. Versions for smartphones are also available.

Other sites with the map of Ekaterinburg:

<http://maps.google.com/>,

<http://www.e1.ru/info/citymap/>,

<http://maps.yandex.ru/>

КАК ДОБРАТЬСЯ ДО ИНСТИТУТА ФИЗИКИ МЕТАЛЛОВ УРО РАН

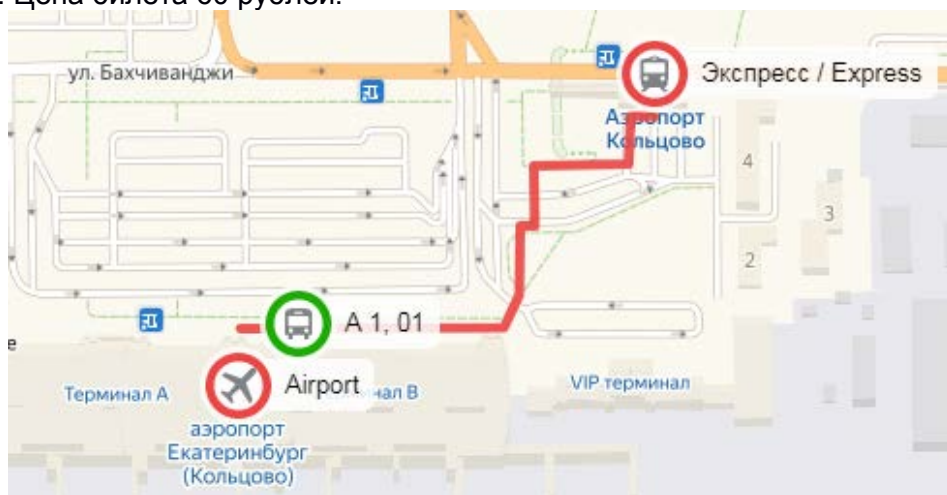
Институт физики металлов им. М.Н. Михеева УрО РАН (ИФМ) находится по адресу ул. Софьи Ковалевской, 18. См. карту «Расположение ИФМ». Оргкомитет организует трансфер из аэропорта «Кольцово», просим указать время прибытия в личном кабинете. Если Вы потерялись по прибытии в аэропорт, свяжитесь с оргкомитетом по телефону +7-912-21-21-899 (доступен с 7 сентября)

От аэропорта до железнодорожного вокзала курсируют автобусы № 1 и № 01, а также электропоезд «Экспресс Кольцово». Автобусная остановка находится перед терминалом. Автобус № 1 следует со всеми остановками с 06:08 до 23:41. Общее время в пути 1 час 5 минут без учета пробок. Цена билета 28 рублей.

Экспресс-автобус № 01 следует без остановок и курсирует круглосуточно. С интервалом около 50 минут. Время в пути около 30 минут без учета пробок. Цена билета 100 рублей. Провоз багажа 20 рублей.

Электропоезд «Экспресс Кольцово». Платформа расположена справа от здания аэропорта.

Время в пути около 45 минут, между конечными станциями семь промежуточных остановок. Цена билета 60 рублей.



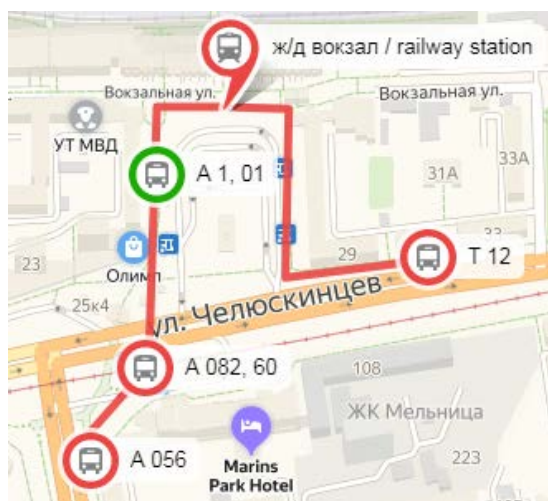
Электропоездом «Экспресс Кольцово» можно доехать до платформы «Первомайская». Пересадка на трамваи №4, 18 (остановка «Восточная», направление под железнодорожный мост), далее до остановки «Первомайская».

Расписание электропоезда «Экспресс Кольцово» (время местное):

Остановочные пункты	№№ поездов			
	6037		6039	
	Отправление	Прибытие	Отправление	Прибытие
Аэропорт Кольцово	08:28		20:26	
о.п. Первомайская	09:02	09:02	20:59	20:59
Екатеринбург-Пассажирский		09:08		21:06

От железнодорожного вокзала до Института физики металлов можно доехать на автобусе и троллейбусе. Ориентировочное время в пути 30 мин.

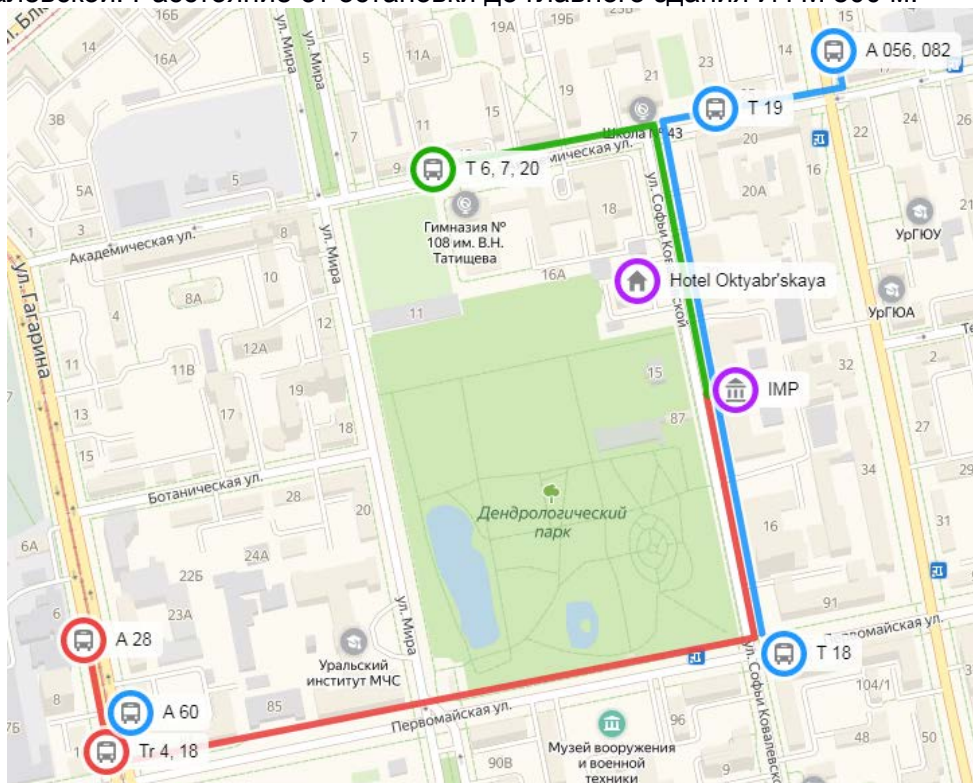
Автобусы № 056, 082, 60. Необходимо по подземному переходу перейти на противоположную сторону ул. Челюскинцев. Остановка маршрутов № 082, 60 находится напротив здания железнодорожного вокзала на ул. Челюскинцев, маршрута № 056 – на ул. Свердлова.



А - автобус, Т – троллейбус. Красным цветом обозначены остановки общественного транспорта. Зеленым – остановка автобусов из аэропорта.

Маршруты №056, 082. Проезд до остановки «Академическая», далее по ул. Академическая до перекрестка Академическая - С.Ковалевской, поворот налево. Расстояние от остановки до главного здания ИФМ 250 м.

Маршрут № 60. Проезд до остановки «Первомайская». Далее от перекрестка улиц Гагарина - Первомайская, вверх по Первомайской, через перекресток Мира - Первомайская до перекрестка С.Ковалевской - Первомайская, поворот налево на ул.С.Ковалевской. Расстояние от остановки до главного здания ИФМ 800 м.



A - автобус, T - троллейбус, Tr – трамвай

Троллейбусы. Троллейбус №18. Остановка находится слева от здания железнодорожного вокзала на ул. Челюскинцев. Проезд до остановки «Софьи Ковалевской» (от остановки назад против хода троллейбуса до перекрестка С. Ковалевской - Первомайская, поворот направо). Расстояние от остановки до главного здания ИФМ 250 м.

Троллейбус №19. Необходимо по подземному переходу перейти на противоположную сторону ул. Челюскинцев. Остановка находится на ул. Свердлова. Проезд до остановки «Академическая» (до перекрестка Академическая - С.Ковалевской, поворот налево). Расстояние от остановки до главного здания ИФМ 300 м.

Стоимость проезда в общественном транспорте Екатеринбурга (трамвай, троллейбус, автобус) составляет 28 руб., в метро - 32 руб.

На железнодорожный вокзал Екатеринбурга (станция «Екатеринбург-Пассажирский») прибывают поезда дальнего следования и пригородного сообщения, в том числе электропоезд из аэропорта «Кольцово». На привокзальную площадь прибывают автобусы №1 и № 01 из аэропорта «Кольцово».

Общественный транспорт в Екатеринбурге работает с 6.00 до 22.00. Для участников, прибывающих поездами дальнего следования в 22.00 до 6.00 будет организован трансфер от железнодорожного вокзала до отелей. Пожалуйста укажите детали

Вашего прибытия в личном кабинете на сайте EASTMAG
http://eastmag2019.imp.uran.ru/?q=show_kabinet в разделе Info.

Ближайшие к Институту физики металлов остановки общественного транспорта по направлению в центр города (см. карту ниже):

До центра города (Гостиница «Центральная»): троллейбусы № 6, 7, 20 от остановки «Мира» (зеленый знак).

До центра города («Площадь 1905 года», «Площадь Труда», «Восточная»): трамвай № 18, автобус № 28. Расстояние от главного здания ИФМ до автобусной остановки составляет 800 м (красный знак).

До железнодорожного вокзала: автобусы № 056, 082 от остановки. "Академическая", автобус № 60 от остановки. «Первомайская» до остановки «Железнодорожный вокзал» (синие знаки).

До станции «Первомайская» (до поезда «Экспресс Кольцово») можно добраться на трамваях № 4, 18 до остановки «Восточная».

Стоимость проезда в екатеринбургском общественном транспорте (трамвай, троллейбус, автобус) составляет 28 рублей, в метро - 32 рубля.

Такси. Участники при необходимости могут воспользоваться услугами такси. Рекомендуемые компании: «Яндекс такси» (343)266-66-66, «Три десятки» (343)310-10-10, «Везёт» (343)380-00-00, есть возможность заказа через приложения для смартфона. Ориентировочная стоимость проезда до ИФМ из центра города или железнодорожного вокзала 200 рублей.

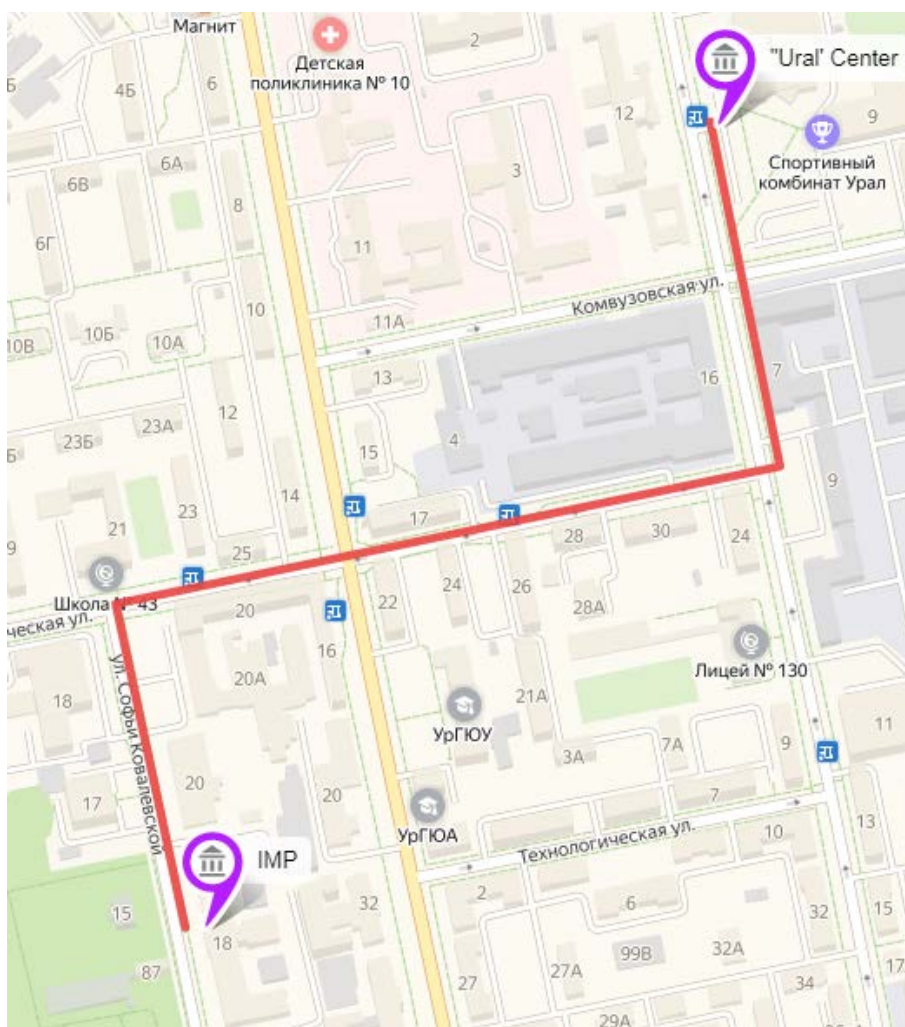
Интернет карты Екатеринбурга (имеются версии для смартфона): www.2gis.ru, <http://maps.google.com/>, <http://www.e1.ru/info/citymap/>, <http://maps.yandex.ru/>.

Расчет маршрутов проезда по Екатеринбургу (остановки, пересадки, протяженность): <http://eka.rusavtobus.ru/>.

Appendix B

VENUE of the “URAL” CULTURAL CENTER for the registration and opening ceremony on September 8 (Sunday)

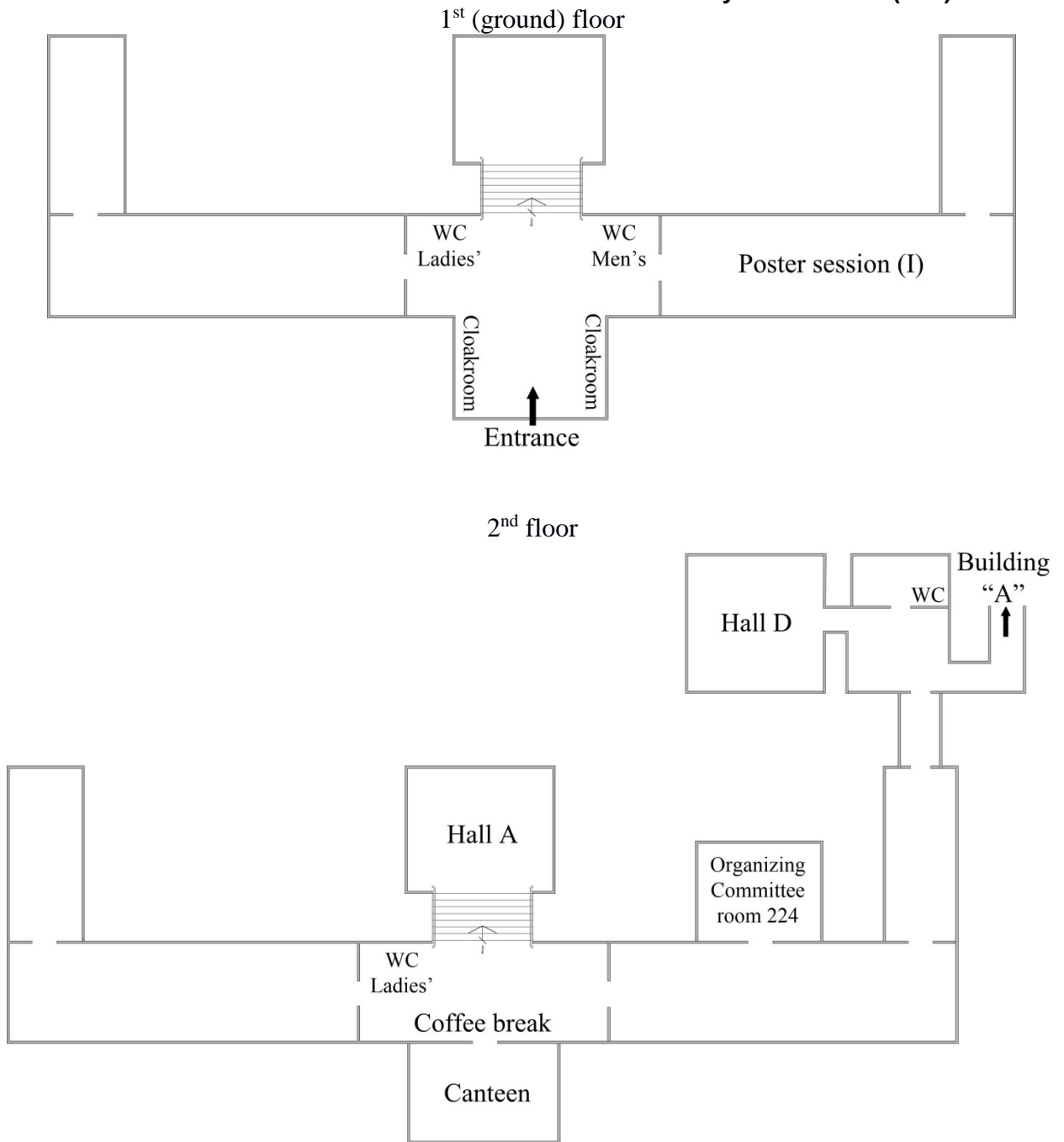
The registration and opening ceremony on **September 8 (Sunday)** will be organized in the Cultural Center "Ural" (Ekaterinburg, 3, Studencheskaya str.) about 15 minutes walk from the Institute of Metal Physics, see the map below. Click [here](#) for exact location.

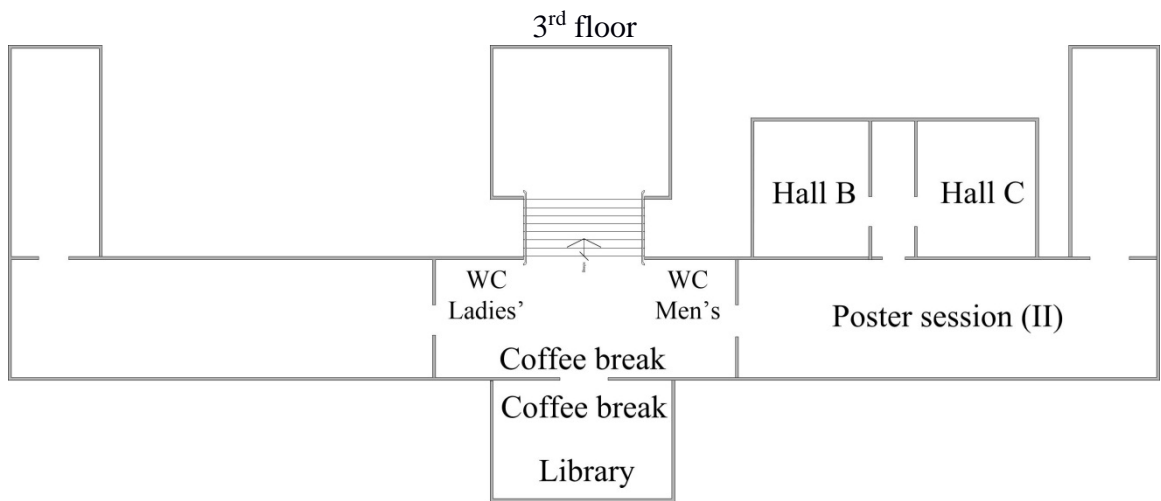


From IMP to the Cultural Center “Ural” (3, Studencheskaya str.) the walking distance is about 1000 m. One should turn to the right from the main building of IMP on 18, S. Kovalevskaya str. to the intersection with Academicheskaya street, then to the intersection with Studencheskaya street and turn left.

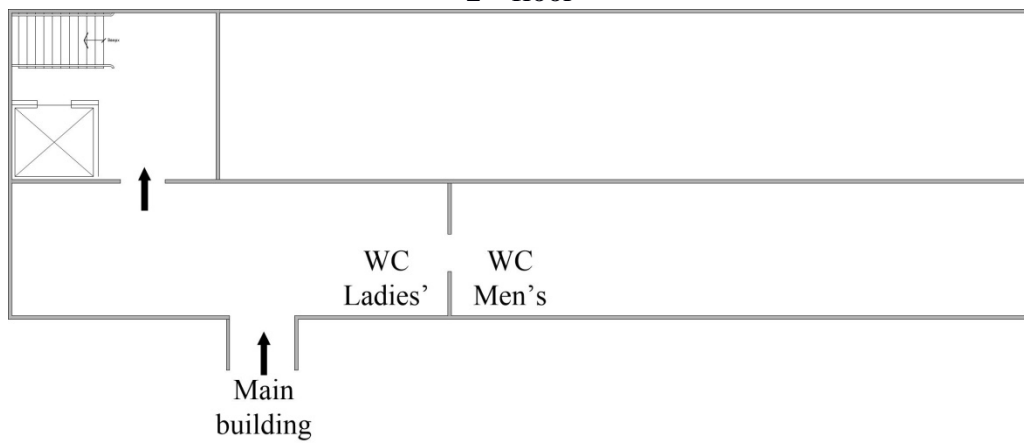
Appendix C

MAIN BUILDING of M.N. Miheev Institute of Metal Physics UB RAS (IMP)

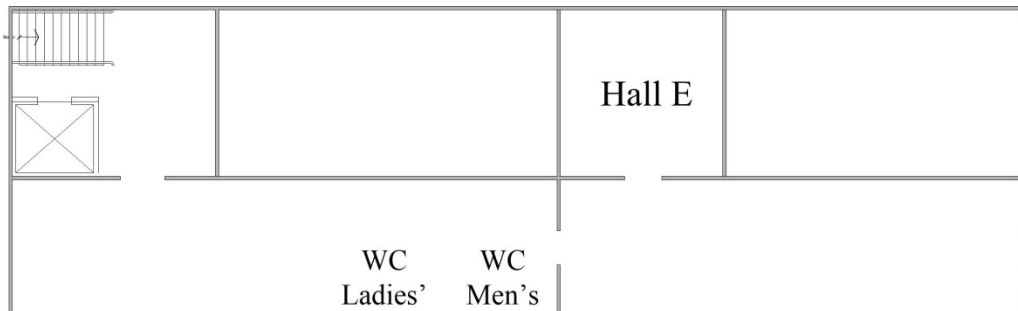




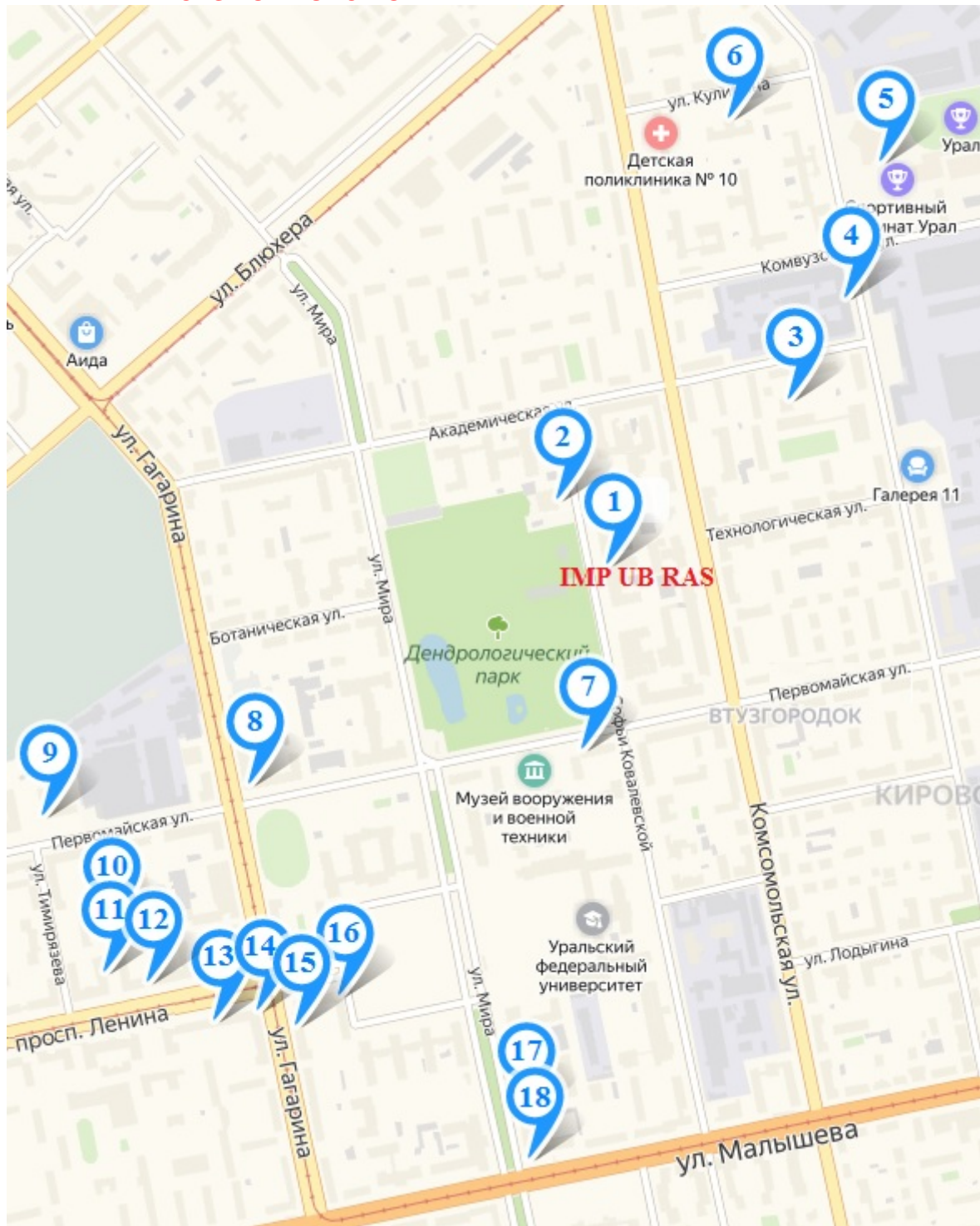
BUILDING A
2nd floor



4th floor



Appendix D
NEARBY PLACES FOR LUNCH OR DINNER



№		Food places	Address, distance (from the main entrance of the IMP UB RAS)	Comments
1	<i>Eng</i>	Canteen, IMP UB RAS	18 S. Kovalevskaya Street	Нет безналичного расчета
	<i>Rus</i>	Столовая ИФМ УрО РАН	С. Ковалевской, 18	Only cash
2	<i>Eng</i>	Vremena goda, restaurant	Hotel "Oktyabr'skaya", 17 S. Kovalevskaya St.; 150 m	Business lunch from 350 rub.; Average bill 2300 rub.
	<i>Rus</i>	Времена года, ресторан	Гостиница "Октябрьская", С. Ковалевской, 17; 150 м	Бизнес-ланч от 350 руб.; Средний чек 2300 руб.
3	<i>Eng</i>	Bigly, bar-restaurant	28a Academicheskaya Street; 650 m	Business lunch from 210 rub.; Average bill 700 rub.
	<i>Rus</i>	Bigly, бар-ресторан	Академическая, 28а; 650 м	Бизнес-ланч от 210 руб. Средний чек 700 руб.
4	<i>Eng</i>	Obedov, canteen	16 Studencheskaya Street; 850 m	Average bill 130 rub.
	<i>Rus</i>	Обедовъ, столовая	Студенческая, 16; 850 м	Средний чек 130 руб.
5	<i>Eng</i>	Ural, cafe	3 Studencheskaya Street; 1.1 km	Business lunch from 170 rub.; Average bill 700 rub.
	<i>Rus</i>	Кафе Урал	Студенческая, 3; 1.1 км	Бизнес-ланч от 170 руб.; Средний чек 700 руб.
6	<i>Eng</i>	Kulibin soul kitchen, cafe	2 Kulibina Street; 1.1 km	Business lunch from 210 rub.; Average bill 500 rub.
	<i>Rus</i>	Душевная кухня Кулибин	Кулибина, 2; 1.1 км	Бизнес-ланч от 210 руб.; Средний чек 500 руб.
7	<i>Eng</i>	Campus Coffee, coffee house	98 Pervomaiskaya Street; 330 m	Business lunch from 150 rub.; Average bill 250 rub.
	<i>Rus</i>	Campus Coffee, кофейня	Первомайская, 98; 330 м	Бизнес-ланч от 150 руб.; Средний чек 250 руб.
8	<i>Eng</i>	Skoroed, cafe (pancake)	27 Gagarina Street; 850 m	Average bill 150 rub.
	<i>Rus</i>	Скороед, кафе (блинная)	Гагарина, 27; 850 м	Средний чек 150 руб.
9	<i>Eng</i>	Cafe на Pervomaiskoy	75 Pervomaiskaya Street; 1.1 km	Average bill 150 rub.
	<i>Rus</i>	Кафе на Первомайской	Первомайская, 75; 1.1 км	Средний чек 150 руб.

10	<i>Eng</i>	Electron, canteen	97a Lenina Avenue; 1.5 km	Business lunch 119 rub.; Average bill 120 rub.
	<i>Rus</i>	Электрон, столовая	Ленина проспект, 97а; 1.5 км	Бизнес-ланч 119 руб.; Средний чек 120 руб.
11	<i>Eng</i>	Matushka, cafe	97 Lenina Avenue; 1.4 km	Business lunch from 130 rub.; Average bill 300 rub.
	<i>Rus</i>	Матушка, кафе русской кухни	Ленина проспект, 97; 1.4 км	Бизнес-ланч от 130 руб.; Средний чек 300 руб.
12	<i>Eng</i>	Bol'shie tarelki, cafe	99 Lenina Avenue; 1.3 km	Business lunch from 199 rub.; Average bill 750 rub.
	<i>Rus</i>	Большие Тарелки, кафе	Ленина проспект, 99; 1.3 км	Бизнес-ланч от 199 руб.; Средний чек 750 руб.
13	<i>Eng</i>	Vilka-Lozhka, restaurant	70 Lenina Avenue; 1.3 km	Business lunch 129 rub.; Average bill 129 rub.
	<i>Rus</i>	Вилка-Ложка, ресторан	Ленина проспект, 70; 1.3 км	Бизнес-ланч 129 руб.; Средний чек 129 руб.
14	<i>Eng</i>	Vecherya u Solokhi, tavern	18 Gagarina Street; 1.2 km	Business lunch from 350 rub.; Average bill 1000 rub.
	<i>Rus</i>	Вечеря у Солохи, корчма	Гагарина, 18; 1.2 км	Бизнес-ланч от 350 руб.; Средний чек 1000 руб.
15	<i>Eng</i>	Papa Jones, pizzeria	33 Gagarina Street; 1.1 km	Business lunch 250 rub.; Average bill 700 rub.
	<i>Rus</i>	Папа Джонс, пиццерия	Гагарина, 33; 1.1 км	Бизнес-ланч 250 руб.; Средний чек 700 руб.
16	<i>Eng</i>	Dodo Pizza, pizzeria	72 Lenina Avenue; 1.0 km	Business lunch 195 rub.; Average bill 350 rub.
	<i>Rus</i>	Додо Пицца, пиццерия	Ленина проспект, 72; 1.0 км	Бизнес-ланч 195 руб.; Средний чек 350 руб.
17	<i>Eng</i>	Yapona Mama, restaurant	23 Mira Street; 1.1 km	Business lunch from 290 rub.; Average bill 550 rub.
	<i>Rus</i>	Япона Мама, ресторан	Мира, 23; 1.1 км	Бизнес-ланч от 290 руб.; Средний чек 550 руб.
18	<i>Eng</i>	8`500 Pan American, кафе-бар	23 Mira Street; 1.2 km	Business lunch from 200 rub.; Average bill 800 rub.
	<i>Rus</i>	8`500 Pan American, cafe-bar	Мира, 23; 1.2 км	Бизнес-ланч от 200 руб.; Средний чек 800 руб.